



Wabash Valley
POWER ALLIANCE

WELCOME

ABOUT THE PROJECT

- Length: ~18 miles
- Voltage: 345 kV
- Counties: La Porte & St. Joseph
- Completion: End of 2028



WHO'S INVOLVED IN THE PROJECT?



PROJECT OWNER



Commonwealth
ENGINEERING + CONSULTING

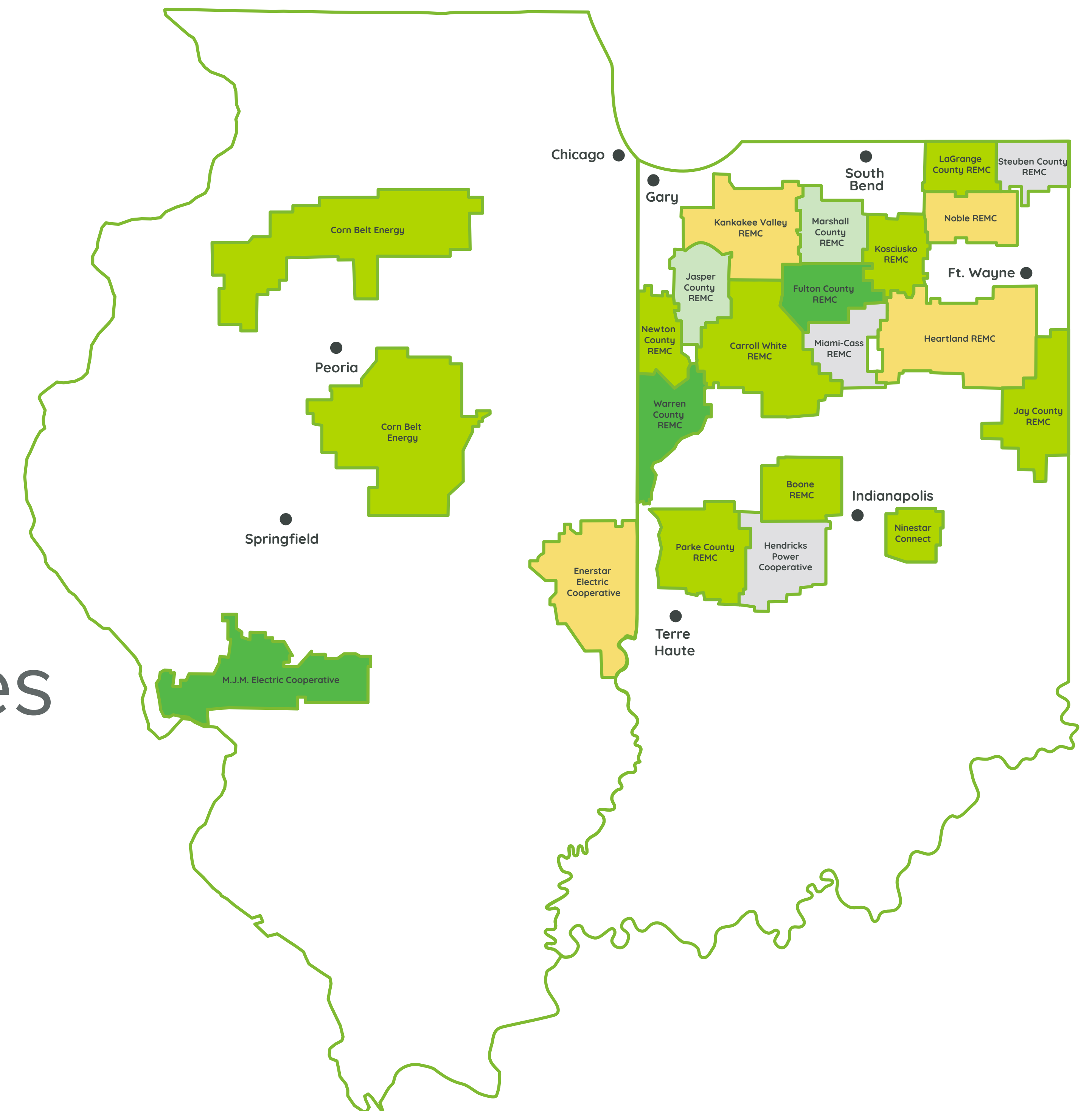
ENGINEERING CONTRACTOR



**ROUTING, LAND ACQUISITION AND
PUBLIC OUTREACH CONTRACTOR**

ABOUT WVPA

Wabash Valley Power Alliance is a generation and transmission cooperative serving 21 distribution electric cooperatives in Indiana and Illinois.



PROJECT BENEFITS



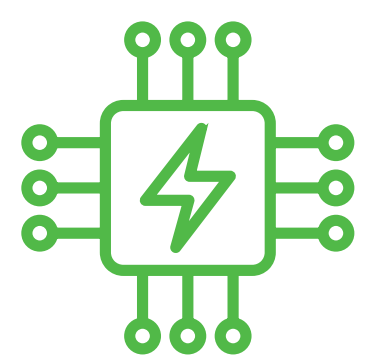
Strengthens reliability and helps integrate new sources of energy for future demand.



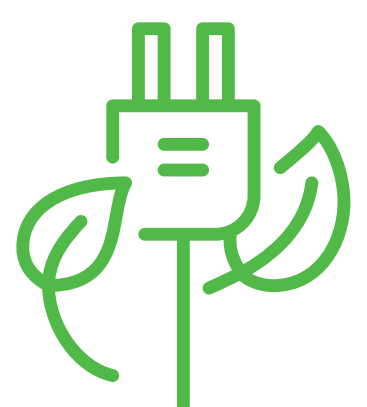
Supports economic development and community growth.



Connects regional generation to the MISO electric grid to deliver increased capacity to members.



Relieves congestion along the energy grid.



Bolsters access to renewable energy as electricity generation evolves.

ROUTING PROCESS

- Public input, combined with technical data, helps refine route alternatives before a final route is selected.
- All route options are evaluated by considering environmental, engineering and social criteria.
- **Stakeholder input is an important part of routing and will be considered throughout the process.**



PROJECT SCHEDULE



**PUBLIC INPUT
BEGINS**
EARLY 2026



**ENVIRONMENTAL
SURVEYS**
MID 2026

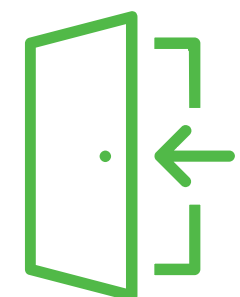


CONSTRUCTION
MID 2027–
LATE 2028



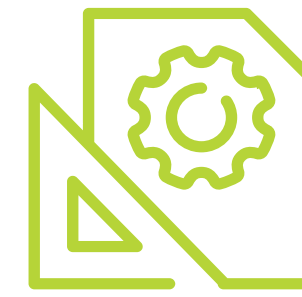
EARLY 2026

**OPEN
HOUSE**



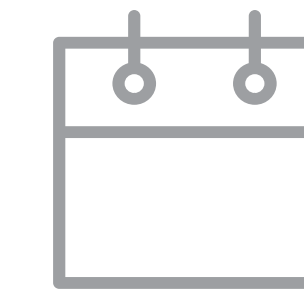
MID 2026-2027

**EASEMENT
NEGOTIATIONS**



EARLY 2029

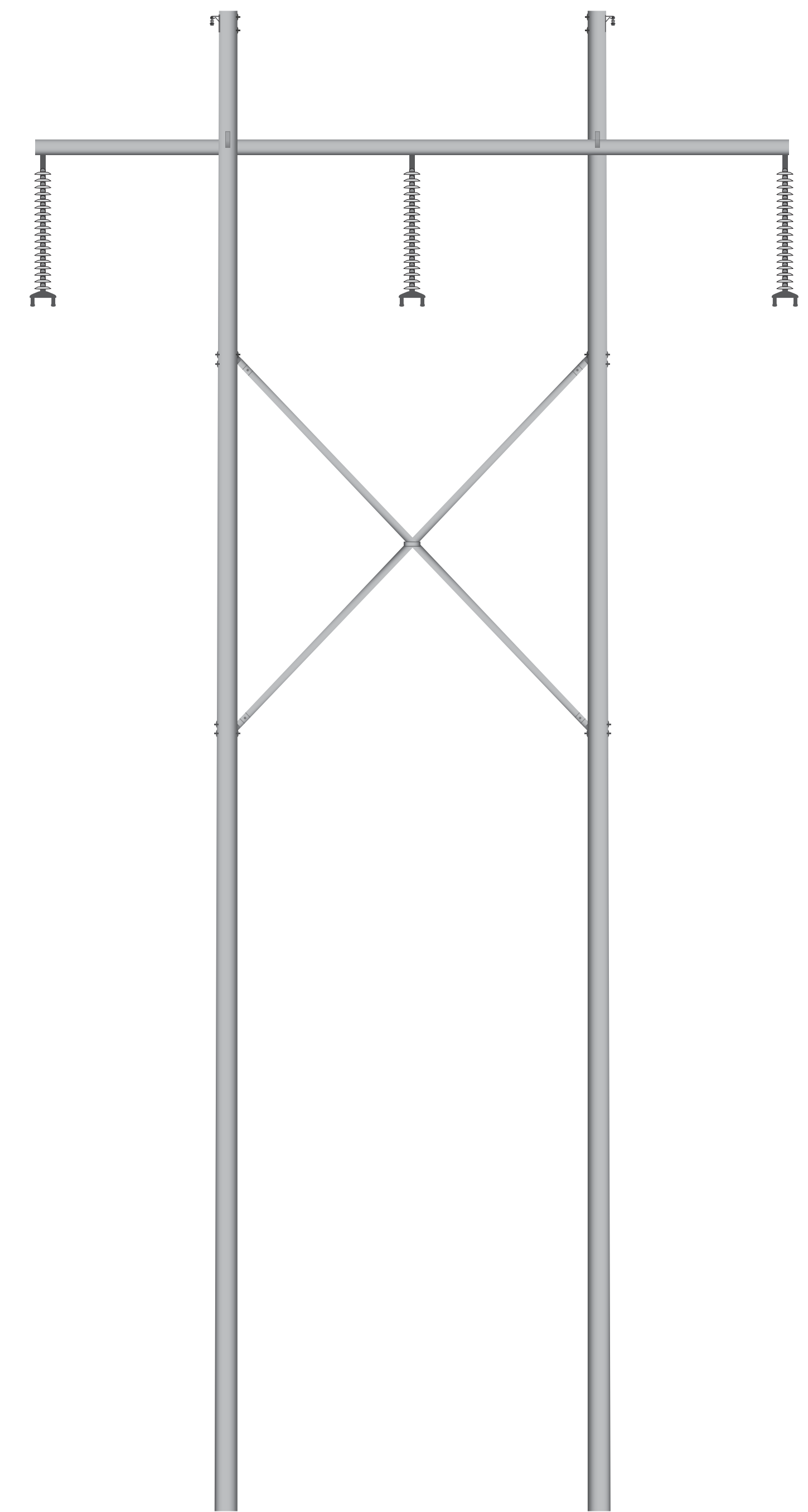
**NEW TRANSMISSION LINE
IN-SERVICE**



This is the current project schedule. All dates are subject to change.

TYPICAL PROJECT STRUCTURES

- H-structure poles will be used to minimize land and visual impact.
- An anticipated 150 foot easement is needed for this project.
- In most cases six structures per mile.
- The structures are approximately 90-110 feet tall and approximately 45 feet wide.



THE POWER GRID

1

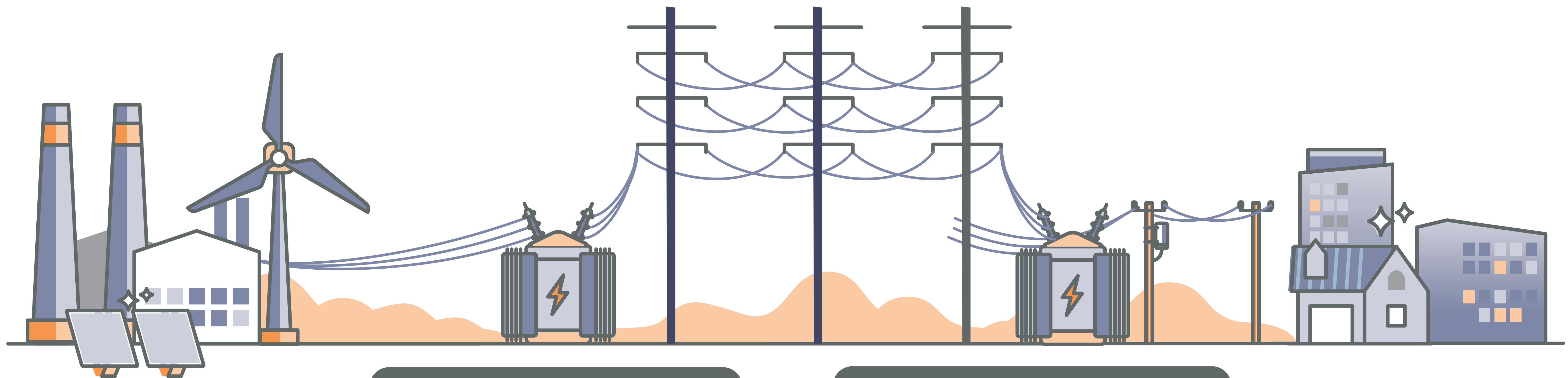
Electricity can be generated in many ways, including coal-fired plants, wind power, combustion turbines, solar power and hydroelectric plants.

2

Electricity is brought onto the grid where it connects to the high-voltage transmission system.

3

Transmission lines carry high-voltage electricity long distances from where it is produced to where it'll be used.



4

Transformers lower the electricity voltage so it can safely be delivered to customers.

5

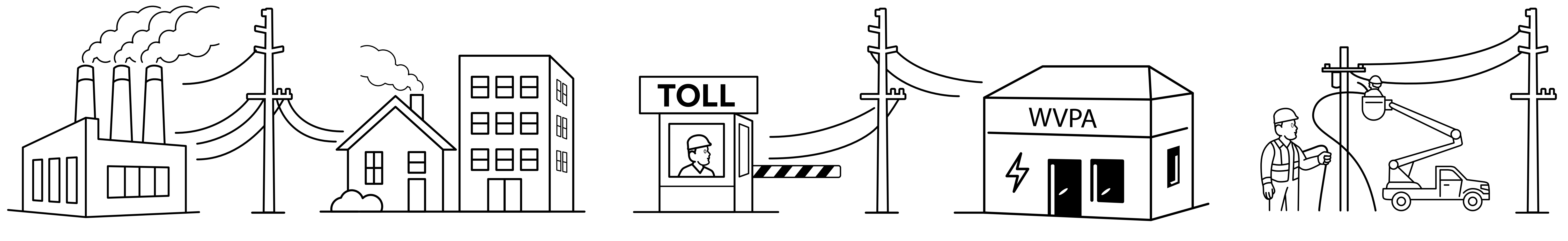
Distribution lines carry the lower voltage electricity to neighborhoods and communities.

GENERATION

TRANSMISSION

DISTRIBUTION

FUNDING A TRANSMISSION LINE



Think of transmission lines as electric highways.

They deliver power from power plants to homes and businesses.

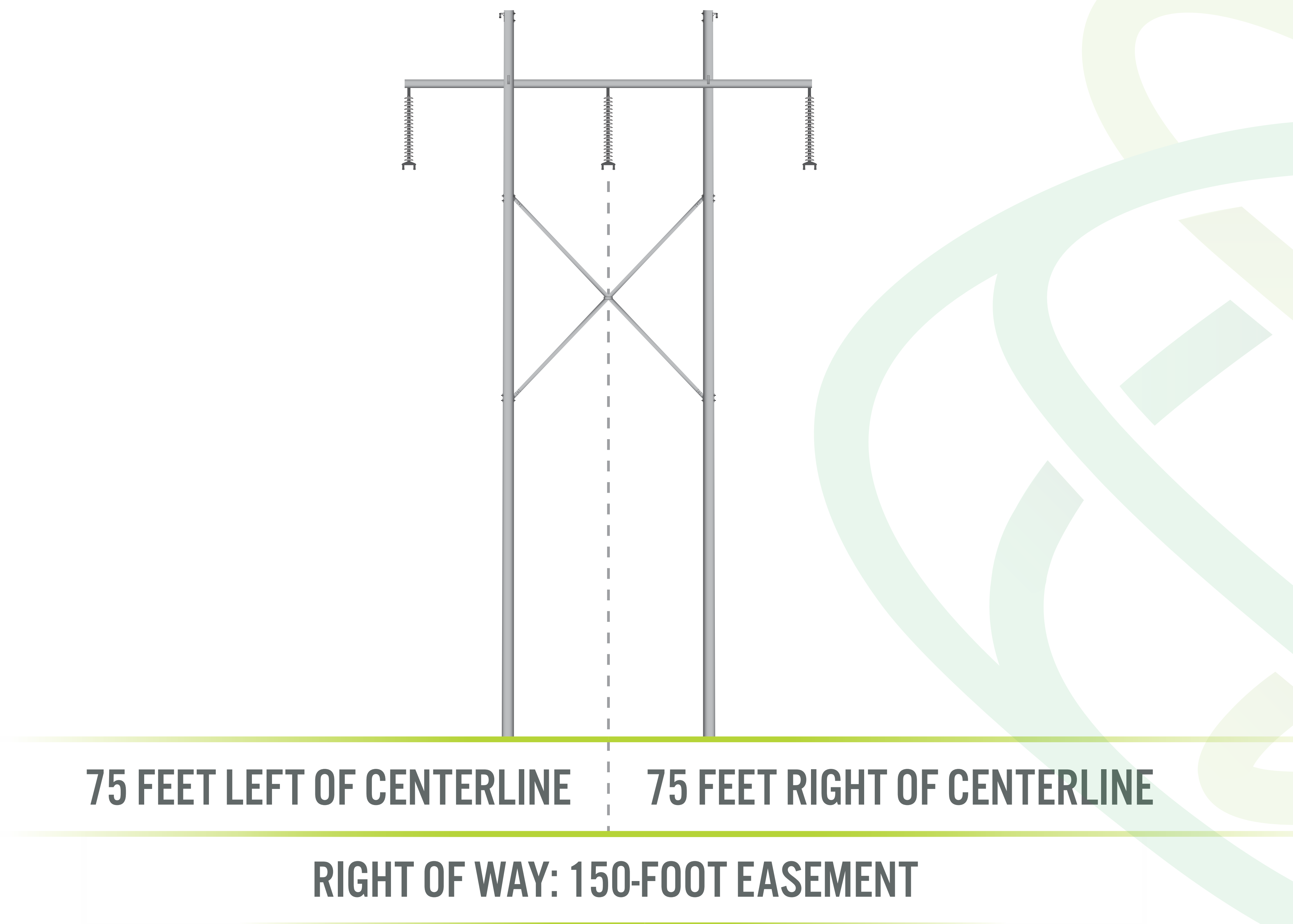
Like vehicles, utilities pay tolls to move electricity along those lines. This is called a transmission charge.

The company owning the transmission lines - in our case, Wabash Valley Power Alliance, receives those fees.

This revenue helps cover the costs of building, operating, and maintaining the transmission "highways."

RIGHT-OF-WAY

- An easement allows use of someone else's property with compensation for a specific purpose, such as building a transmission line.
- A 150-foot easement is needed for this project, with 75 feet on either side of the center line.



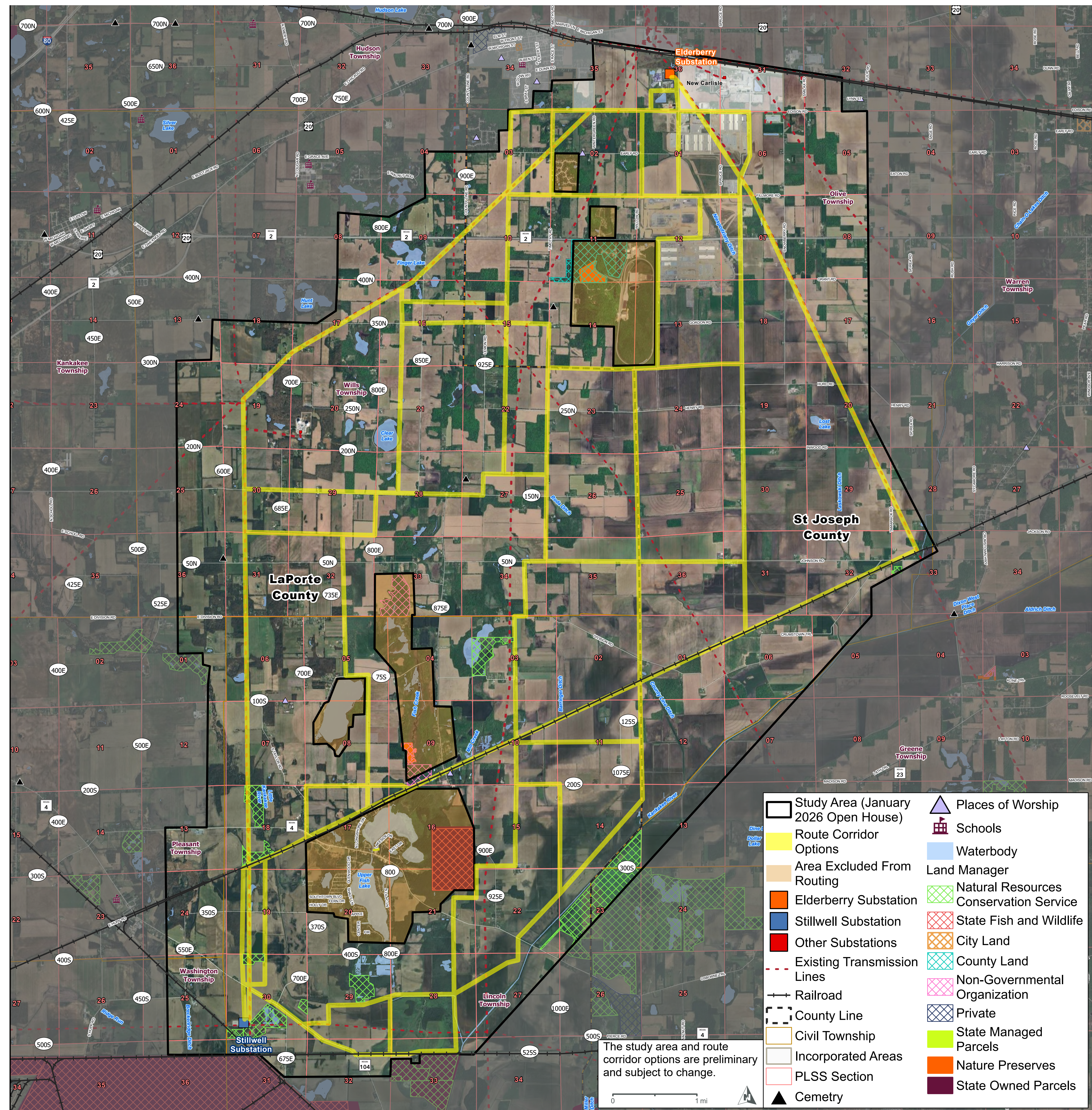
WORKING WITH YOU

- We will work directly and fairly with property owners to obtain easements.
- Farming is a compatible activity within transmission lines right-of-way, with some safety restrictions.
- Wabash Valley Power Alliance recognizes concerns about property values and visual impacts and remains committed to respectful communication and fair compensation.



ROUTE SEGMENT OPTIONS

Detailed parcel maps are available around the room at map stations and at the GIS computer station.



HOW TO LEAVE A COMMENT



Complete your comment card during the meeting and return it to project staff



Provide comments at the GIS station



Give us a call at 888-997-0766



Email us at elderberrystillwell@wvpa.com



Use the contact us page on www.Elderberry-Stillwell.com



Wabash Valley
POWER ALLIANCE

THANK YOU FOR ATTENDING